

Line Thermal Printers



Standard type



Available in black



Label type

CT-S2000



Paper Roll 82.5 mm

Paper Roll 80 mm

Paper Roll 60 mm

Paper Roll 58 mm

- 220 mm/sec high-speed printing
- 82.5 / 80 / 60 / 58mm selectable paper width
- Front paper exit
- Water proof design(Conform to IPX1)
- One touch cover open and Easy paper loading
- Larger paper roll capability as \varnothing 102 mm
- Optional interface cards
- USB is default in addition to Serial or Parallel interface board
- Built-in AC adapter
- Label/Black mark function(option)
- Cash drawer kick-out
- Bitmap data registration(NV memory)
- Barcode printing
- ESC/POS compatibility
- Page mode
- Two color printing
- Smoothing font
- Easy customization by software
- Availability in white or black or dark grey(option)

Applications

- Receipt
- Coupon
- Ticket
- Daily report
- Kitchen
- Delivery
- Barcode

Type Classification

CT-S2000 DC RS E BK L
 1) 2) 3) 4) 5) 6)

1) Model type
CT-S2000

2) Power Supply
None: AC power type
DC: DC power supply type

3) Interface
PA: Parallere + USB
RS: Serial + USB
UB: USB only (Option)

4) Character set
U: USA
E: Europe

5) Body case color
WH: Cool white
BK: Black
GR: Dark Grey (Option)

One touch cover open



Easy paper loading



Just drop paper in and close the top cover.

Accessories

Interface cards



Parallel



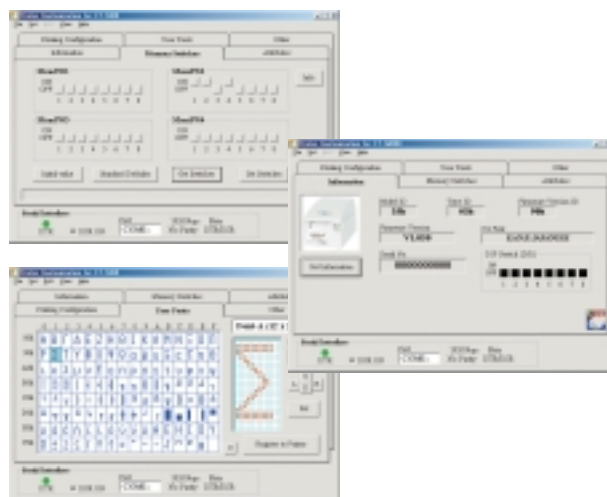
Serial



USB

USB is default in addition to Serial or Parallel interface board

Customization software for easy customization



Specifications	
Printing method	Line thermal dot printing
Printing width	82.5 mm paper: 80mm / 640 dots 80 mm paper: 72mm / 576 dots 60 mm paper: 54.5mm / 436 dots 58 mm paper: 54mm / 432 dots
Dot pitch	8 × 8 dots / mm (203 dpi × 203 dpi)
Printing speed	Max. 220 mm/sec (52 lines/sec)
Number of columns	82.5 mm paper: Font A - 53 columns / Font B - 71 columns / Font C - 80 columns 80 mm paper: Font A - 48 columns / Font B - 64 columns / Font C - 72 columns 60 mm paper: Font A - 36 columns / Font B - 48 columns / Font C - 54 columns 58 mm paper: Font A - 35 columns / Font B - 46 columns / Font C - 52 columns
Character size (W x H)	Font A: 1.25 × 3.0 mm (12 × 24 dots) / Font B: 0.88 × 3.00mm (9 × 24 dots) / Font C: 0.88 × 2.00(8 × 16 dots)
Character table	Code page 437, 850, 852, 857, 858, 860, 863, 864, 865, 866, Katakana, WPC1252, Thai code 18
Barcode type	UPC-A / UPC-E / JAN(EAN)-13/8 / ITF / Code 39 / CODE 128 / CODABAR/ Code 93
Line spacing	4.23mm (1/6 inch), can be set by command
Paper	82.5/80/60/58 mm × ø102 mm
Interface	Parallel(IEEE1284 compliant)+USB, Serial(RS-232C)+USB
Input buffer	4K bytes / 45 bytes
NV user memory	384K bytes
Drawer kick-out	2 drawers
Power supply	DC 24V ± 7%
AC adapter	Input: AC100-240V, 50/60Hz, 150VA Output: DC24V, 2A
Weight	AC power type: 2.0kg / DC power type: 1.8kg
Dimensions (W x D x H)	147 × 207 × 147 mm
Operating environment	5 ~ 40°C, 10 ~ 90% RH (No condensation)
Storage environment	-20 ~ 60°C, 10 ~ 90% RH (No condensation)
Reliability	Main unit: 20,000,000 lines, Thermal head: 200,000,000 pulse or 150 km, Auto cutter: 2,000,000 cuts
EMC and safety standard	UL, C-UL, FCC class A, TUV-GS, CE marking

6) Label/Black mark

None: Standard(No sensor type)
L: Label sensor type
M: Black mark sensor type